

# KINGSWOOD CONNECT

Quarterly Newsletter for our community



## NEWS & FEATURES

Wellbeing  
Activities



Help & Support  
Services



Community Events  
for Families &  
Individuals



Wellbeing and  
Skills Development  
Courses



Working Together

Police & Community

Councillors' Surgery



## KINGSMEADOW @ MADEFOREVER COMMUNITY HUB



### FOR ALL YOUR COMMUNITY NEEDS

Kingsmeadow @ MadeForever is the hub of the community. We are a registered charity aimed at preventing isolation, reaching out to those already in isolation and enhancing wellbeing.

We work with individuals, families and young people facing multiple challenges. We provide a range of services and wellbeing activities for everyone in our community.

### Make a Donation

Make a donation today to support people and families who need K@M4E during these challenging times. The knock-on effects of Covid-19, compounded with the economic downturn, and the ongoing huge rises in the cost of living, are responsible for a huge decline in the emotional wellbeing of many people in our community.

By making a donation you can help us bring people back from the brink.

We promise you that your donation will go directly towards crisis prevention, providing essential support packages, food parcels, free hot meals, clothing, and other emergency items, as well as health and wellbeing support to provide some stability in these difficult times.

Thank you for your support.

To donate even more at no extra cost to you simply check the box during the online process to qualify this donation as Gift Aid. You must have paid UK Income or Capital Gains Tax to the value of 28% of your gift.

Answer this online survey and give suggestions about the Kingmeadow @ MadeForever Wellbeing Activities and services.

<https://www.surveymonkey.co.uk/r/8JQXTV8>

For more information contact us on 0117 301 8734  
Email: [info@kingsmeadowmade4ever.org.uk](mailto:info@kingsmeadowmade4ever.org.uk)

**Venue:** kingsmeadow @ MadeForever **COMMUNITY HUB, CHARITY SHOP, GARDEN & CAFE**  
Fisher Road, Kingswood, Bristol, BS15 4RQ

**Facebook:** kingsmeadowmade4ever - website: [www.kingsmeadowmade4ever.org.uk](http://www.kingsmeadowmade4ever.org.uk)



# SUMMER HOLIDAY EVENT

**24th, 25th, 26th July 2024**

JOIN US FOR 3 DAYS SUMMER HOLIDAY ACTIVITIES  
FOR FAMILIES. ENGAGE WITH YOUR COMMUNITY &  
MEET OTHER FAMILIES.

## PROGRAMME OF ACTIVITIES

**Wednesday, 24th & Thursday, 25th July**

**11 am - 3pm**

- Live Music
- Face Painting
- Dodgeball
- Raffle
- Bouncy Castle!
- Bouldering room activities
- Garden & Community Clean-up activities
- A variety of Fun Family Friendly Activities

**Our friendly café will be open  
to purchase food/drinks items**

**Friday, 26th July 9am - 6pm**

Coach day trip to Weston-Super-Mare,  
Pick-up at 9am/ drop-off approx 6pm

**Please contact us for details  
to reserve a place**

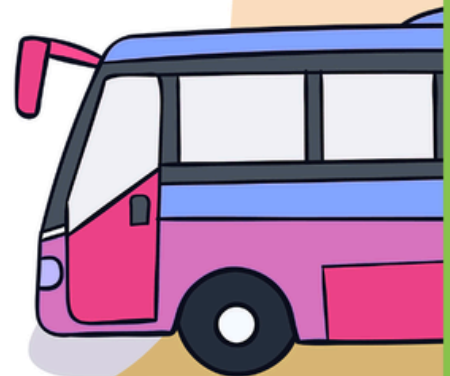
**£5 refundable deposit per family**

**Raffle  
tickets  
available for  
purchase  
now!**

**- Family meal deal at  
our friendly Cafe  
- Bargain at our  
Charity Shop**

**Our Coach trip  
is kindly  
supported by**

**Mothers' UNION**  
Christian care for families



Charity No.1148905

**Venue:** Kingsmeadow @ MadeForever Community Hub, Fisher Road, Kingswood, Bristol, BS15 4RQ

For more information contact us on call: 0117 301 8734 - Email: [info@kingsmeadowmade4ever.org.uk](mailto:info@kingsmeadowmade4ever.org.uk)

Facebook: [kingsmeadowmade4ever](https://www.facebook.com/kingsmeadowmade4ever) - [www.kingsmeadowmade4ever.org.uk](http://www.kingsmeadowmade4ever.org.uk)



# Kingswood Park

Our park at the heart of our community



## Yoga

**Wednesdays 6.30 - 7.30pm, starting 17 July**

At the bottom of the park - a relaxing class for everybody, led by Pippa.



## Tai Chi

**Tuesdays 6.30pm - 7.30pm, starting 23 July**

In the tennis courts - a gentle introduction to this revitalising art - suitable for most abilities.



## Mindfulness Workshops

**Tuesdays 10.30am - 12 noon, starting 23rd July**

Come and relax in the sensory garden, and explore what it means to live in the moment - please contact [Georgina.green@southglos.gov.uk](mailto:Georgina.green@southglos.gov.uk) to attend.



## Couch to 1 Mile

**Mondays 10.30 - 11.30am, starting 15 July**

A six week coach-led course to get you fit enough to run 1 mile - meet at main entrance. Please book by contacting enquiry email.



## Group Walks

**Tuesdays 1 - 2pm, starting 16th July**

Join us for a gentle walk around the park with tea and refreshments provided- meet at the main entrance.



## Wild Wednesdays

**10.30am - 12.30pm, starting 10 July**

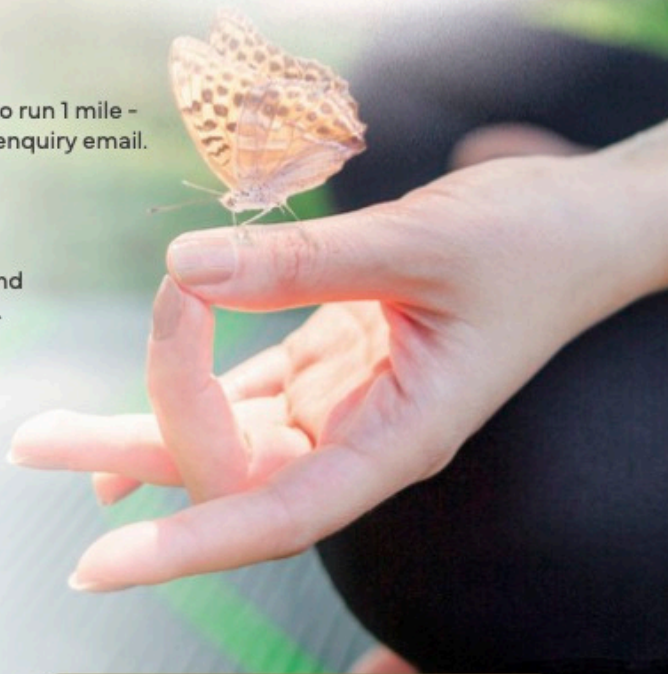
Family friendly nature-themed activities, and crafting - meet at the bandstand.



## Gardening workshops

**Wednesdays 1 - 3pm, throughout July**

Meet at the bandstand.



[kingswoodpark@southglos.gov.uk](mailto:kingswoodpark@southglos.gov.uk)





# Find information website for adults, children and families



**Children and families**  
Family advice, such as childcare and education options, parenting support, and things to do



**Adults**  
Care options for older people, including how to remain independent



**Search**  
Connect with community groups, events and activities in your area



**SEND Local Offer**  
Special educational needs and disabilities (SEND) services and information



Visit our website to find information and advice about services and support available for adults, children and families in South Gloucestershire.  [www.southglos.gov.uk/IAG](http://www.southglos.gov.uk/IAG)

Built by South Gloucestershire Council with local partner organisations.

# HELP WITH TECH



## =Cafe=

**THURSDAYS 13:00 - 16:00**

**One to One & Drop-in  
Sessions Available!**

**Do you need help  
using your phone,  
tablet, laptop or with  
technology?**

**Are you frustrated  
everything is online  
these days?**



**You are welcome to our FREE  
sessions. We provide support with:**

- Accessing the **NHS** online services
- Connecting with friends & family on social media
- Joining online groups or support sessions
- Emailing
- Accessing bus & travel timetables
- Online shopping
- Job searching  
and more...

**Whether you have no experience or looking  
to update your skills, we are here to help.**

***Just drop in for support with your queries, or  
1:2:1 assistance is available if preferred!***

***Bring your own smartphone, laptop or tablet or use  
one of our laptops.***

**VENUE:** kingsmeadow @ MadeForever - Community Hub,  
Shop, Garden & Cafe  
Fisher Road, Kingswood - Bristol BS15 4RQ

**For more information contact us on call: 0117 301 8734**

Email: [info@kingsmeadowmade4ever.org.uk](mailto:info@kingsmeadowmade4ever.org.uk)

**Facebook: kingsmeadowmade4ever - website: [www.kingsmeadowmade4ever.org.uk](http://www.kingsmeadowmade4ever.org.uk)**

Registered Charity No: 1148905





WHAT'S ON  
AT

# Kingswood library

located inside the Civic Centre

We are open with staff:

**Monday**  
10:00 - 17:30

**Wednesday**  
10:00 - 17:30

**Friday**  
10:00 - 17:30

**Saturday**  
9.30am-1pm

## Children's groups



### Rhymetime

Wed 9:30-10am

### Friday Fun

Fri 9:30-10am

Join in singing, simple crafts and nursery rhymes in these bouncy sessions for babies and toddlers

**Saturdays**  
**10-11am**

There's lots going on Saturdays at the library. Call or visit to find out more.

## LEGO CLUB

Building blocks at the ready! Join us for a story and monthly Lego session. Age 4+



Monthly club for games, activities and lots of chatter. Age 7-11

## Craft group

**Alternate Mondays 15:30-17:00**  
**Saturday 11:00-12:30**

Help yourself to tea and coffee and bring along your knitting, crochet, embroidery or anything else and join this friendly group for a crafty natter at the library.

## MINI BUILDERS

Too little for Lego? Join us for a monthly preschool playtime with a story and Duplo.

### Friday Crafternoons

at Kingswood Library  
Every Friday 3:30-4:30pm

Join our free, drop in after school craft and collage sessions! We have lots to cut, stick and decorate so you can make your own works of art.

This activity is suitable for primary school age children. All children must be accompanied by an adult. Some materials may not be suitable for pre-school children.

THE READING AGENCY

2024  
**Summer Reading Challenge**  
Delivered in partnership with libraries

**Marvellous Makers**

Join FREE at your library  
Get rewards for reading!

[summerreadingchallenge.org.uk](http://summerreadingchallenge.org.uk)

**STARTS SAT 6TH JULY**

ARTS COUNCIL ENGLAND

READING AGENCY Collaborative creativity CREATE!

2024  
**Marvellous Makers**  
Delivered in partnership with libraries

**Kingswood Library**  
**FREE activities for primary school aged children**

<b>Marvellous Inventions</b> Wednesday 24 July 2:30 - 3:30pm	<b>Story Crafters</b> Wednesday 21 August 2:30 - 3:30pm
<b>Junk Box Builders</b> Wednesday 7 August 2:30 - 3:30pm	<b>Grand Finale</b> Wednesday 28 August 2:30 - 3:30pm
<b>Mystery Makers</b> Wednesday 14 August 2:30 - 3:30pm	<b>Puppetry Workshop</b> with Tiny and Tall Productions Wednesday 31 July 2 - 3:30pm

Children attending must be 6+ and accompanied by an adult.  
Places are limited for this activity.  
Book your FREE ticket at [gslibraries.eventbrite.com](http://gslibraries.eventbrite.com)  
Tickets available from 1 JULY

Active Libraries

[southglos.gov.uk/summerreadingchallenge](http://southglos.gov.uk/summerreadingchallenge)

Your paragraph text

For more information about any of these events and activities, call the library on **01454 868006** or email [kingswood.library@southglos.gov.uk](mailto:kingswood.library@southglos.gov.uk)

For all children's activities, all children must be accompanied by an adult.



# Skills Connect

## MONTHLY INFO / ADVICE SESSIONS

### *Struggling to find*

- **Employment?**
- **Access to further education?**
- **Apprenticeships?**
- **Paid or voluntary work?**
- **Training?**

**Drop-in  
Sessions:**  
First Monday  
of every month  
1-4pm

Skills Connect offers **BESPOKE 1:1 MENTORING** to help you take your next step in your employment journey.



Come along to our **FREE** sessions hosted at Kingsmeadow Made Forever Community Hub, to get started on your road to employment!



• kingsmeadow @ MadeForever - Community Hub,  
Charity Shop, Garden & Cafe  
Fisher Road, Kingswood - Bristol BS15 4RQ



For more information contact us on call: 0117 301 8734

Email: [info@kingsmeadowmade4ever.org.uk](mailto:info@kingsmeadowmade4ever.org.uk)

**Facebook:** [kingsmeadowmade4ever](https://www.facebook.com/kingsmeadowmade4ever) - **website:** [www.kingsmeadowmade4ever.org.uk](http://www.kingsmeadowmade4ever.org.uk)

Registered Charity No: 1148905



# Community Food Fund

The Community Food Fund aims to support Food Aid organisations working to help our residents to have access to food.

Community organisations can apply for funding of up to £500 per month to help fund additional food supplies or to run public food aid facilities for residents of South Gloucestershire.

Grants can be used as full or part funding or as match funding to cover the costs of food supplies, running costs and volunteer expenses.

Awards can be made to voluntary, community and social enterprise organisations and town and parish councils that have registered and been approved. Find out more about the requirements on our [grants registration page](#).

## More information?

For more information on the principles of the scheme and how to apply, go to [southglos.gov.uk/community-food-fund](https://southglos.gov.uk/community-food-fund)

You can email the Grants Helpline for advice on [grants@southglos.gov.uk](mailto:grants@southglos.gov.uk) or call 01454 865865, Monday to Friday, 9am to 4pm.



## Funds for Community Spaces in South Gloucestershire



Community Welcome Spaces grant funding aims to support community groups working to help our residents to keep warm this winter in community spaces. Grant funding of up to £500 per month is available to organisations who wish to provide a Community Welcome Space on a first come, first served basis.

If you have a community space that you would like to receive funding for, contact the grants team to ask for an application form.

Awards can be made to voluntary, community and social enterprise organisations and town and parish councils.

## More information?

For further information please visit <https://beta.southglos.gov.uk/community-welcome-spaces-grant>

To speak to the Grants Team, call 01454 865865, or email your query to [grants@southglos.gov.uk](mailto:grants@southglos.gov.uk)

# Sounds & Wellbeing in Nature

Kingsmeadow@  
**MADE-FOREVER**  
Changing  
lives  
together

 **WEST OF ENGLAND  
MUSIC THERAPY  
& WELLBEING**

**Mondays  
13:30-15:15  
Bi-weekly**

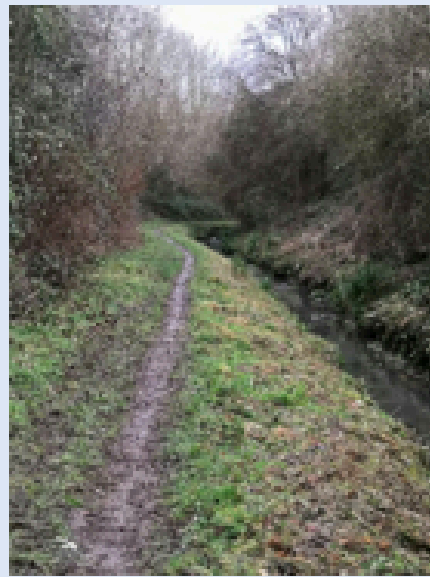
**CREATE - a sound garden**  
**CONNECT - outdoors through music**  
**COMMUNITY - make instruments together**

**For further information please contact us on  
0117 301 8734 or  
[info@kingsmeadowmade4ever.org.uk](mailto:info@kingsmeadowmade4ever.org.uk)**

**Venue: Kingsmeadow @ MadeForever  
COMMUNITY HUB, CHARITY SHOP, GARDEN & CAFE  
Fisher Road, Kingswood, Bristol, BS15 4RQ  
Facebook: [kingsmeadowmade4ever](https://www.facebook.com/kingsmeadowmade4ever)  
[www.kingsmeadowmade4ever.org.uk](http://www.kingsmeadowmade4ever.org.uk)  
Charity No.1148905**



# Walking With Friends



**On Thursdays from 1pm until 2pm**

**We start and end at Kingsmeadow Madeforever, Fisher Road, BS15 4RQ** where there is a café and toilet facilities as well as a car park. Be prepared for mud and rain !

The photograph above shows a path alongside the Warmley Brook.

**Walking with Friends** extends a warm welcome to anyone who would like to take a gentle stroll at a leisurely pace, around the lovely Siston Commons. We walk at your pace so that you can enjoy the sights and sounds and have a chat with other people if you wish. It is suitable for wheelchairs and children's buggies as we will keep to the shared all weather paths if we need to.

Please feel free to just come along and join in!

Or you can ask for more information by:

Tel. 0117 301 8739 email [kingsmeadowmade4ever.org.uk](mailto:kingsmeadowmade4ever.org.uk)



# Walk and Talk

## For carers in Bristol and South Gloucestershire

Do you look after someone who could not manage without your support and do not receive a payment for it? If so, you may be a carer.

Meet other carers and take a stroll around a local green area close to you at our informal Walk and Talk group. You will get a chance to enjoy being outdoors in the company of other carers.

One of our friendly support workers will lead the walk, offer a listening ear and provide information to support you in your caring role.

To find out more, call us on 07742 291 073 or  
Email [walk@carerssupportcentre.org.uk](mailto:walk@carerssupportcentre.org.uk)



Carers Support Centre  
Bristol & South Gloucestershire



[www.carerssupportcentre.org.uk](http://www.carerssupportcentre.org.uk)





# ***Planters for sale!***

## ***Made to order!***



***Large planter***  
***(91 X 52 X 43 CM): £45***

***Small planter***  
***(52 X 52 X 43 CM): £25***



kingsmeadow @ MadeForever - Community Hub,  
Charity Shop, Garden & Cafe  
Fisher Road, Kingswood - Bristol BS15 4RQ

For more information contact us on call: 0117 301 8734  
Email: [info@kingsmeadowmade4ever.org.uk](mailto:info@kingsmeadowmade4ever.org.uk)

Facebook: [kingsmeadowmade4ever](https://www.facebook.com/kingsmeadowmade4ever) - website: [www.kingsmeadowmade4ever.org.uk](http://www.kingsmeadowmade4ever.org.uk)

Registered Charity No: 1148905





 @works4youthSG

 @works4youth

**Are you a school leaver, or student and need some career advice or guidance?  
Come to our drop in to speak to an Employability & Skills Mentor**

**skills  
CONNECT**

  
South Gloucestershire  
Council

Delivering for you

- Prepare for life after school
- Create a CV
- Identify and apply for courses
- Build confidence and motivation



Developing  
skills

Getting  
a job

Connecting  
with local  
employers

Overcoming  
barriers

**STARTS:  
TUESDAY 4<sup>TH</sup> JUNE 2024 @  
KINGSWOOD SKILLS HUB**

**Where: Skills Hub, King's  
Chase Shopping Centre,  
Kingswood BS15 8LP**

**When: Tuesdays 2pm to 4pm**

Additionally, if you are post-16 and not in employment or full-time education you may also be eligible for our Works4Youth: Engaging Potential programme. For more information contact Works4Youth on 01454 865009 or [works4youth@southglos.gov.uk](mailto:works4youth@southglos.gov.uk)



Kingsmeadow®  
**MADE-FOREVER**  
Changing  
lives  
together

## COMMUNITY GARDEN & GREEN SPACE

Connect with nature and enhance your wellbeing

**Every Thursday  
1-3pm**



*Join our Community gardening  
and green space activities*

**For further information please contact us on  
0117 301 8734 or [info@kingsmeadowmade4ever.org.uk](mailto:info@kingsmeadowmade4ever.org.uk)**

Venue: Kingsmeadow @ MadeForever - COMMUNITY HUB,  
CHARITY SHOP, GARDEN & CAFE - Fisher Road, Kingswood,  
Bristol, BS15 4RQ

Facebook: [kingsmeadowmade4ever](https://www.kingsmeadowmade4ever.org.uk) -  
[www.kingsmeadowmade4ever.org.uk](http://www.kingsmeadowmade4ever.org.uk)

Charity No.1148905





# ***Two hours of family fun!***

**FREE LAUNCH SESSION (BOTH ACTIVITIES)  
1ST MARCH 6-8 PM  
THEN EVERY OTHER FRIDAY STARTING 8TH MARCH**

## **ROLLER DISCO & BOULDERING FORTNIGHTLY SESSIONS (6-8PM)**



**(BRING YOUR OWN SKATES OR BORROW OURS)**



**BOTH  
ACTIVITIES  
INCLUDED IN  
TICKET PRICE!**

**VENUE: KINGSMEADOW@MADEFOREVER,  
FISHER ROAD, KINGSWOOD, BRISTOL. BS15 4RQ.**

**£10 PER FAMILY OF 4 (£3 EACH ADDITIONAL PERSON - PAY ON ARRIVAL)**

**CAFE OPEN FOR SNACKS AND DRINKS**



# Employability & Skills Drop In

Hosted by South Glos. Council's Community Learning & Skills Service

## Employment, Skills and Training needs?

Come and speak to one of our friendly advisers to receive information, advice or guidance on:



- Job support
- Changing careers
- Improving your income
- Training and skills opportunities



Whether you're in work, or unemployed, we can support you to plan a pathway that's right for you.

**Employment • Skills • Training**

### How to book

	Where:	One Stop Shop, Kingswood Civic Centre, High Street, Kingswood
	When:	Tuesdays, every fortnight, 9.30am-12pm
	Start date:	Tuesday 14 <sup>th</sup> May 2024
	Book here:	No need to book
	More info:	Email: <a href="mailto:community.learning@southglos.gov.uk">community.learning@southglos.gov.uk</a>

### Extras

- SGC Community Learning & Skills Service manage and deliver various employability projects to support multiple needs.
- Free Adult Learning is available to residents over 19 with few or no qualifications, or experiencing barriers to work.

Funded by:



We welcome you all to join us at

**K@M4E**

**TOTS FAMILY**

**Meet-up.**

Come & enjoy fun, Learning & play activities in a safe and welcoming place whilst making new friends.

For families with children from birth to school age.

- Available disabled toilets
- Baby Changing facilities
- Friendly Cafe on site
- Free parking



Venue: Kingsmeadow @ MadeForever COMMUNITY HUB, CHARITY SHOP, GARDEN & CAFE - Fisher Road, Kingswood, Bristol, BS15 4RQ  
Facebook: kingsmeadowmade4ever  
www.kingsmeadowmade4ever.org.uk

Charity No.1148905

**Fridays, 10am - 12pm**

**TERM TIME ONLY**

Kingsmeadow @ MadeForever also offers variety of wellbeing activities & services for individual, children, family and young people. Come along and have a look around.

For more information

call: 0117 301 87 34

Email: [info@kingsmeadowmade4ever.org.uk](mailto:info@kingsmeadowmade4ever.org.uk)

website:

[www.kingsmeadowmade4ever.org.uk](http://www.kingsmeadowmade4ever.org.uk)

Facebook: kingsmeadowmade4ever



## Kingsmeadow Crochet Group

**EVERY OTHER TUESDAY - 1 - 3PM**

If you love to crochet or just enjoy spending some relaxed time with people in your community over lovely cup of hot drink, this group welcomes you to share your knowledge, skills, ideas and learn from each other.

No crochet experience necessary!

For further information please contact us on 0117 301 8734 or [info@kingsmeadowmade4ever.org.uk](mailto:info@kingsmeadowmade4ever.org.uk)

Venue: Kingsmeadow @ MadeForever COMMUNITY HUB, CHARITY SHOP, GARDEN & CAFE Fisher Road, Kingswood, Bristol, BS15 4RQ

Facebook: kingsmeadowmade4ever  
[www.kingsmeadowmade4ever.org.uk](http://www.kingsmeadowmade4ever.org.uk)

Charity No.1148905

Kingsmeadow@  
**MADE-FOREVER**  
Changing lives together



# Coffee Morning

Every Monday 10.30am 12.30pm



Would you like to meet people in a friendly relaxed setting?  
You are welcome to join our coffee morning!

## A coffee morning is a perfect chance to:

- Bring people together in the community
- Discuss ideas & issues
- Expand your social activities, meet friends or catch-up with family over a cuppa.

**And if you wish to stay longer,  
lunch is also available at our café!**

*Disabled access/facilities available*

For further information please contact us on

0117 301 8734 or

[info@kingsmeadowmade4ever.org.uk](mailto:info@kingsmeadowmade4ever.org.uk)



Venue: Kingsmeadow @ MadeForever COMMUNITY HUB, CHARITY  
SHOP, GARDEN & CAFE - Fisher Road, Kingswood, Bristol, BS15 4RQ

Facebook: [kingsmeadowmade4ever](https://www.facebook.com/kingsmeadowmade4ever)  
[www.kingsmeadowmade4ever.org.uk](http://www.kingsmeadowmade4ever.org.uk)

Charity No.1148905



# COUNCILLORS' SURGERY

## Meet your local Councillors for New Cheltenham Ward

If you need any information or help from your Local councillor, you are welcome to come along to one of our SURGERIES.

**Time:** 10.30 – 11.30am

**1st Saturday & 3rd Thursday  
of the Month**



**VENUE:** Kingsmeadow @ MadeForever  
Fisher Road, Kingswood  
Bristol, BS15 4RQ  
[www.kingsmeadowmade4ever.org.uk](http://www.kingsmeadowmade4ever.org.uk)

**Sandie Davis & Matt Palmer**  
[Sandie.Davis@southglos.gov.uk](mailto:Sandie.Davis@southglos.gov.uk)  
[Matt.Palmer@southglos.gov.uk](mailto:Matt.Palmer@southglos.gov.uk)

**For more information call: 0117 301 87 39 or email [info@kingsmeadowmade4ever.org.uk](mailto:info@kingsmeadowmade4ever.org.uk)**  
**Facebook:** [kingsmeadowmade4ever](https://www.facebook.com/kingsmeadowmade4ever) **Website:** [www.kingsmeadowmade4ever.org.uk](http://www.kingsmeadowmade4ever.org.uk)

## Funds for local community projects in South Gloucestershire



Member Awarded Funding (MAF) is available from South Gloucestershire councillors to support community groups working to help our residents.

Each councillor can allocate up to £1,000 to local projects and services in their ward **before March 2025**.

If you have an idea for a project or service that will help people, [contact your councillor](#) to discuss your plans and to ask for an application form.

Awards can be made to voluntary, community and social enterprise organisations and town and parish councils.

### Find out more:

You can find full information at [www.southglos.gov.uk/MAF](http://www.southglos.gov.uk/MAF), including the principles of the scheme and case studies of previous projects. All organisations must be registered with us. Find out more on the [registration page](#).

### Contact us:

For advice and guidance you can contact the Grants Team by,

Phone: 01454 865865  
Email: [grants@southglos.gov.uk](mailto:grants@southglos.gov.uk)

For more information:

 [livedexperience@southglos.gov.uk](mailto:livedexperience@southglos.gov.uk)

## If you have experience of services relating to:

- domestic abuse
- homelessness
- drug/alcohol misuse
- children's services, adult safeguarding and/or social care

You could help us improve our services and reach more people who need support.

Our Lived Experiences group is a team of experts who really understand the problems people are facing.

### By joining you will:

- meet others with similar experiences and professionals who work in relevant services
- benefit from this continuing opportunity to develop professional skills
- receive vouchers as a thank you for your involvement



# ***PLANTS FOR SALE***

## ***Strawberries***

## ***Tomatoes***

## ***Beetroot***

## ***+ More***

## ***£3.50 Per Pot***



kingsmeadow @ MadeForever - Community Hub,  
Shop, Garden & Cafe  
Fisher Road, Kingswood - Bristol BS15 4RQ

**For more information contact us on call: 0117 301 8734**

**Email: [info@kingsmeadowmade4ever.org.uk](mailto:info@kingsmeadowmade4ever.org.uk)**

**Facebook: [kingsmeadowmade4ever](https://www.facebook.com/kingsmeadowmade4ever) - website: [www.kingsmeadowmade4ever.org.uk](http://www.kingsmeadowmade4ever.org.uk)**

Registered Charity No: 1148905

# COMMUNITY SERVICES

**POLICE Emergency and high priority:** [www.avonandsomerset.police.uk/report/](http://www.avonandsomerset.police.uk/report/)  
Beat Surgery: Please come along. The team will be delighted to meet you at  
Kingsmeadow@MadeForever.

**Kingsmeadow @ MadeForever Support:** Call 0117 3018734 or  
Email: [info@kingsmeadowmade4ever.org.uk](mailto:info@kingsmeadowmade4ever.org.uk)

**DHI (Developing Health & Independence):** [www.webfam.co.uk](http://www.webfam.co.uk)

**Carers Support Centre:** Call 01179652200 or Email [walk@carerssupportcentre.org.uk](mailto:walk@carerssupportcentre.org.uk)

**North Bristol advice Centre:** Call 0117 9515751 or [www.northbristoladvice.org.uk](http://www.northbristoladvice.org.uk)

**Community Learning:** Contact Anthony Hill 01454 864613 or Email  
[Anthony.hill@southglos.gov.uk](mailto:Anthony.hill@southglos.gov.uk)

**Skills Connect:** [southglos.gov.uk/communitylearning](http://southglos.gov.uk/communitylearning)

**SGC Directory:** [www.southglos.gov.uk/search-information-services](http://www.southglos.gov.uk/search-information-services)

**Meet the Councillors:** New Cheltenham Councillors, Sandie Davis and Matt Palmer  
will be at Kingsmeadow@MadeForever Cafe from 10.30 – 11.30am every first Saturday  
& third Thursday of the month for residents to raise any local issues with them.

\* If you would like to sign up to receive this quarterly Newsletter, please email us on  
[info@kingsmeadowmade4ever.org.uk](mailto:info@kingsmeadowmade4ever.org.uk)



[www.kingsmeadowmade4ever.org.uk](http://www.kingsmeadowmade4ever.org.uk)  
Kingsmeadow @ MadeForever  
Fisher Road, Kingswood, Bristol, BS15 4RQ  
0117 3018734  
Charity N°: 1148905

