

Kingsmeadow

For all area residents - Knightstone, Merlin, Guinness, private tenants, owners!

In this edition:

- Update on the Community meetings
- Residents take action for community safety
- Autumn at Kingsmeadow Flat
- Community Youth Bus

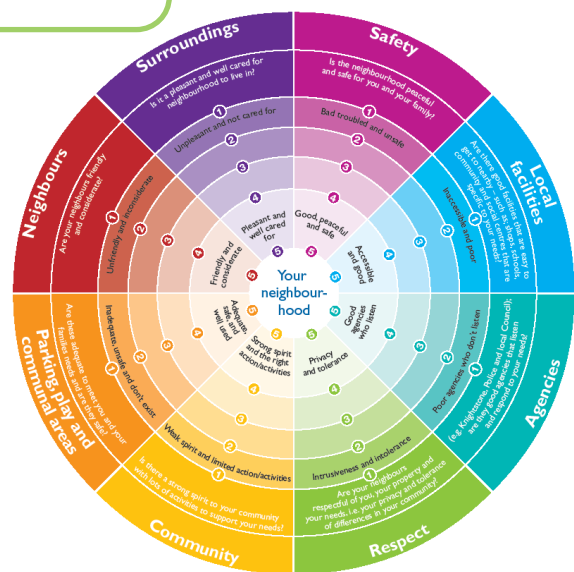
Newsletter September 2012

Community Meetings; residents take action for Community Safety



In August we held three community meetings to deal with the three main points from the community survey:

1. Dealing with parking problems.
2. Organising social activities for adults.
3. Community safety around speeding cars, motorbikes and pushbikes on footpaths, the green, and the road.



No residents came to the meeting we had to discuss **parking** issues. But some of the same issues came up in the community safety meeting so we were able to talk about parking issues there.

Cooking, gardening, and sharing food and skills were some of the ideas that came out of the **social activities** group. Watch this space for more on this! There is a possible allotment/training garden in Kingsmeadow. We hope to start soon to get it ready for a productive year next year. Call Katie on 0117 984 8107 if you are interested!

The **community safety** meeting was very lively with lots of discussion between residents, Knightstone staff, Councillor Bill Bowrey, and Alison Richards from the Council's Streetcare team. The group identified a number of 'hotspots' that needed attention. With that in mind, the Council are looking into:

- Bollarding off the pavement on Gilpin where people are cutting through in their cars to the back of Caddick Close
- Putting 'keep clear' areas into cul-de-sacs to improve traffic flow
- Putting staggered gates or some other sort of traffic flow system on area footpaths to slow down quickly moving pushbikes and motor bikes
- Putting traffic cushions of Gilpin to slow traffic.

Cllr Bowrey stressed the importance of going to the Safer Stronger Kingswood meeting. This meeting is where the police decide their policing priorities for the next period. They partly base their decisions based on what they hear from local people who come to the meeting.

So, several residents agreed to go to the meeting along with Ben Pryke (Housing Officer). The meeting was on 10 September. Cllr. Bowrey made sure that Gilpin Close was on the meeting agenda. Because of the strength of the residents' turnout at this meeting, Gilpin Close has become one of the policing priorities until the next meeting.

This means the police will be making an extra effort to patrol the Close and deal with any safety and speeding issues.

What else can be done?

The police rely on people reporting issues to them. Up until the Sept 10 meeting, they had had only 6 calls raising concerns about road safety from Gilpin this whole year. This would not have led them to suspect the size of the problem.

It is very important that if you see something that concerns you that you call the police; even if they cannot attend right away, the number of calls they receive will alert them to the problem and make sure they continue to make policing road safety in the area a priority.

What's next?

The **next Community Safety meeting** will be at:

Kingsmeadow Community Flat
Friday 28 September
10:30 – 12:30

Refreshments provided

Cllr Bowrey, Knightstone staff, Council staff and the Police will all be there to continue to work with residents on this important issue. Please come along if you can!



Autumn at the Community Flat!



Good News! Big News!

The Kingsmeadow Community Flat is now a registered charity. This will help us go forward with our work with you in the community. Coming soon, we will be running a consultation about our green space. How can we improve it? What's needed? A skate park, an improved play park, more sports facilities, less dog poo? For more information contact Ceri Naylor at the Flat on 0117 904 8425.

Autumn Dreamscheme

The Kingsmeadow Community Flat is delighted to **Jane Curtis**, the new Dreamscheme worker! She's already hard at work planning for the **autumn ½ term**. **From Monday 29th October to Friday 2nd Nov** you can expect to see bike workshops, the fossil club, baking, filming and music clubs and much much more – look out for the complete programme soon!

New Play Group

Starting 19 Sept. a **new Stay and Play** group will be running **every Wednesday from 10 – 11:30**. Supported by Sure Start, families with tots aged 0- 5 years can enjoy messy play, story and rhyme time, crafts and games. Spaces are still available! Please contact Jane or Janet at the Community Flat; call 0117 904 8425.



Training

October will see the start of our **Introduction to Volunteering training**. There are still spaces available. Why should you be interested? Because it will be a good place to meet new friends, find out what's happening locally, and find new interests, build on skills and make a difference to your community. For more information, call Ceri at the Flat.

Helping hand project –

Ask at the Community Flat for more about this new project!

Calling all performers!

We are seeking talented actors/actresses/musicians/MC's/DJ's for new exciting opportunity to produce a short film - ideal for ages 12+. Call Ceri for more details!

**Kingsmeadow Community Flat. 19 Barrington Close,
Kingswood**

0117 904 8425 info@kingsmeadowflat.org.uk

Attention Young People! Get on the bus!

The Kingswood Community Bus is the coming to Gilpin Close

The Community Bus a free project for young people – like a youth club on wheels. Music, art, information, snacks, games and relaxation – something for everyone is going to drive up and park in your neighbourhood.

The bus will be in the layby halfway up Gilpin, beside the grassy area and under the big tree. Look for it every Monday from 7:00 to 9:00 pm. starting in October.

Please can residents avoid parking in the layby on Monday evenings in October, November, and the first week of December.

In the meantime, mobile youth workers will be coming to the neighbourhood in the evening to find out what you want to do on the bus when it's here. Watch out for them!



Katie Scaife
Community Empowerment Officer
0117 984 8107
Email: Katie.scaife@knightstone.co.uk

Dates for your diary

Friday 28 Sept
Community Safety Meeting
Kingsmeadow Community Flat
10:30 – 12:30

Every Wednesday
Stay and Play for young families
Kingsmeadow Community Flat
10 – 11:30

Starting in October

Every Monday
Community Youth Bus
Gilpin Close
7 – 9 pm

Monday 29 Oct – Friday 2 Nov
½ Term Dreamscheme
Kingsmeadow Community Flat
The final program will be out soon.

Like writing? Do you want to share a story or ideas with your neighbours? Get involved with writing the next Kingsmeadow Newsletter! For more details, please call or text Katie Scaife on 07796946095 or email Katie.Scaife@knightstone.co.uk

KNIGHTSTONE

